

O2-MAX™ Trio

O2-MAX Trio

DIAL IN YOUR CPAP

Only O2-MAX Trio offers a *disposable* CPAP generator with up to **21 specific combinations of FiO₂ and PEEP** so your CPAP treatment is fully adaptable to the needs of your patient and/or protocols

- 3 - FiO₂ levels*
- 3 - PEEP settings†
- BiTrac ED™ Mask



†Shown with BiTrac ED Mask, Full Head Cap and 3-SET O2-CPAP Valve

*Fractional inspired oxygen (FiO₂) levels of approximately 30%, 60%, 90%+

Complete line of pre-assembled CPAP systems for immediate ventilation

Pulmodyne®



Head Strap



Full Cap Head Gear



O2-MAX Trio Control Unit

Part No.	Product Description	Size	Case/Qty.
----------	---------------------	------	-----------

O2-MAX™ Trio System: BiTrac ED Full Face Mask with **Head Strap**, Expandable Anti-Asphyxia Circuit with CPAP Valve, Variable 30/60/90 FiO₂ Flow Generator with 6" O₂ Hose, DISS Connector and Adapter (22mmM x 30mmM)

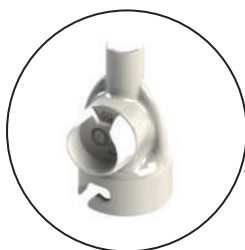
313-8001X	BiTrac ED Mask w/5.0cm CPAP Valve	Adult Medium	10
313-8002X	BiTrac ED Mask w/7.5cm CPAP Valve	Adult Medium	10
313-8003X	BiTrac ED Mask w/10.0cm CPAP Valve	Adult Medium	10
313-8004X	BiTrac ED Mask w/12.5cm CPAP Valve	Adult Medium	10
313-8005X	BiTrac ED Mask w/15.0cm CPAP Valve	Adult Medium	10
313-8006X	BiTrac ED Mask w/20.0cm CPAP Valve	Adult Medium	10
313-8007X	BiTrac ED Mask w/3-SET™ O ₂ -CPAP™ Valve (5.0/7.5/10.0cm)	Adult Medium	10
313-8008X	BiTrac ED Mask w/5-SET™ O ₂ -CPAP™ Valve (5.0/7.5/10.0/12.5/15.0cm)	Adult Medium	10
313-8011X	BiTrac ED Mask w/5.0cm CPAP Valve	Adult Large	10
313-8012X	BiTrac ED Mask w/7.50cm CPAP Valve	Adult Large	10
313-8013X	BiTrac ED Mask w/10.0cm CPAP Valve	Adult Large	10
313-8014X	BiTrac ED Mask w/12.5cm CPAP Valve	Adult Large	10
313-8015X	BiTrac ED Mask w/15.0cm CPAP Valve	Adult Large	10
313-8016X	BiTrac ED Mask w/20.0cm CPAP Valve	Adult Large	10
313-8017X	BiTrac ED Mask w/3-SET O ₂ -CPAP Valve (5.0/7.5/10.0cm)	Adult Large	10
313-8018X	BiTrac ED Mask w/5-SET O ₂ -CPAP Valve (5.0/7.5/10.0/12.5/15.0cm)	Adult Large	10

O2-MAX™ Trio System: BiTrac ED Full Face Mask with **Full Cap Head Gear**, Expandable Anti-Asphyxia Circuit with CPAP Valve, Variable 30/60/90 FiO₂ Flow Generator with 6" O₂ Hose, DISS Connector and Adapter (22mmM x 30mmM)

313-8107X	BiTrac ED Mask w/3-SET O ₂ -CPAP Valve (5.0/7.5/10.0cm)	Adult Medium	10
313-8108X	BiTrac ED Mask w/5-SET O ₂ -CPAP Valve (5.0/7.5/10.0/12.5/15.0cm)	Adult Medium	10
313-8117X	BiTrac ED Mask w/3-SET O ₂ -CPAP Valve (5.0/7.5/10.0cm)	Adult Large	10
313-8118X	BiTrac ED Mask w/5-SET O ₂ -CPAP Valve (5.0/7.5/10.0/12.5/15.0cm)	Adult Large	10

O2-MAX™ Trio Control Unit

313-8000	Variable Trio Control Unit with 6" O ₂ Hose and DISS Connector	N/A	10
----------	---	-----	----



Made in USA



Single Patient Use



Latex Free

Complete line of pre-assembled CPAP systems for immediate ventilation

Pulmodyne®

... bringing change to life®

MMSI
McARTHUR
MEDICAL SALES INC.

1846 5th Concession W., P.O. Box 7, Rockton, Ontario L0R 1X0
Tel. (519) 622-4030 • Toll Free Line 1-800-996-6674 • Fax (519) 622-1142
www.mcarthurmedical.com • mmsi@mcArthurmedical.com